



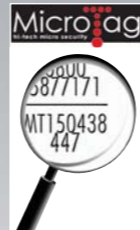
### Theft Deterrent, Prevention and Security of Your Motorhome

This is taken very seriously with Elddis. That is why we have provided a combination of standard features and optional extras designed to deter and prevent thieves from stealing your property. And in the unlikely event that they should succeed, aid the identification and speedy recovery of your investment and assist in the prosecution of the thief.



#### Microtag®

Supplied as standard with every Elddis 2007 season motorhome, MicroTag® is an innovative and technologically advanced property tracing system that can be easily applied to all your valuables. Marking your property with Microdots not only deters theft, but will also help lead to the successful prosecution of the thief and the recovery of your stolen valuables.



#### Minder

Theft of motorhomes is a growing problem. The UK Motorhome Industry and HPI have joined together to create MINDER, a vehicle security system to protect your investment. All new Elddis Motorhomes will carry new identification numbers giving a greater level of security to owners and enabling future buyers to confidently identify the vehicle and check its history. The system is based on HPI's database holding details of over 60 million vehicles registered in the UK.

#### Elddis on the Web

For further information, 360° degree tours, details of your nearest retailer, useful downloads and other Elddis vehicles can be found on our fully detailed website at:

[www.elddis-motorhomes.com](http://www.elddis-motorhomes.com)

Why not sign up for our email news service for the latest information on Explorer, Elddis and exclusive offers direct to your desktop via email.

This brochure does not constitute an offer by The Explorer Group Limited (Explorer). Explorer reserves the right to, and does alter from time to time, technical specifications, prices and model ranges as materials, model improvements and conditions require, and can accept no responsibility for discrepancies between these and subsequent models shown. This brochure and the photographs used are for guidance purposes only. Please be sure to check full current and technical specifications with your retailer, or on our website, before ordering your new motorhome. All household items illustrated in the brochure are used to enhance photography and are for display purposes only. They are not supplied with your motorhome. Please note that Approved Retailers are not the agents of The Explorer Group Limited. Accordingly they have no authority to bind Explorer or to make any representation or undertaking whatsoever on behalf of Explorer.



### 2007 Motorhome Collection



north east  
england



**The Explorer Group Limited**  
Manufacturers of Touring Caravans & Motorhomes  
Explorer House, Delves Lane, Consett, Co.Durham DH8 7PE  
Tel: 01207 699 000 Fax: 01207 699 001  
[www.explorer-group.co.uk](http://www.explorer-group.co.uk)





### Elddis Autoquest 2007

This very popular UK built motorhome range has been transformed in 2007 with the introduction of the stunning new Peugeot Boxer 2.2ltr HDi chassis.

Autoquest continues to be one of the best-equipped entry-level coach-built motorhomes on the market today with a huge range of optional extras available to suit every need.

In 2007 we've introduced 2 new Lo-Line layouts, the 115 and 120 offering truly affordable 2 berth touring.

### Autoquest - Exterior Styling

Built on the new Peugeot Boxer the 2007 Autoquest features black and silver aero style exterior graphics.

The new wider bodied cab has excellent all round visibility and can produce 100bhp/250NM torque. Combined with the responsiveness of the smooth 5-speed gearbox the Autoquest as always is a pleasure to drive.

Safety is improved with driver's airbag, assisted ABS and disc brakes as standard.

### Autoquest - Interior Living Space

The spacious interior features sprung upholstery in vibrant red and gold 'Ragolle Arno', lined 'Torino Old Gold' curtains with matching tie backs, and coordinating 'Islay Straw' loose lay carpets.

Montreal Maple furnishings, with framed Ash furniture doors and chrome handles, bring out the true warmth and richness of the beautiful interior design. Whilst larger than average windows, thoughtful layouts and a range of lighting give this ever-popular range a unique and spacious appeal.

The cab is packed with features such as fully upholstered seats, overhead parcel shelf and plenty of handy storage for maps, tour guides and refreshments.

### Key Standard Features

- Peugeot 2.2ltr 100bhp HDi Turbo Diesel Boxer Chassis
- Peugeot CD/Radio System
- Over Cab Pull Down Double Bed (100/130/140/150)
- Spinflo Duplex Combination Oven & Grill
- Spinflo 3 Burner Hob with High-Speed Multi-function Burner
- Argent Linen Finish Stainless Steel Sink & Drainer
- Chinchilla Glass Worktops to Sink & Hob
- Dometic RM7270 Refrigerator with Electronic Ignition (77ltr)
- Framed Ash Shaker Style Furniture Doors
- Montreal Maple Veneer Furniture
- Sprung Upholstery
- Loose Lay Removable Carpet
- Reich Shower Mixer Equipment
- Full Shower Compartment with Curtain
- Thetford C402 Bench Toilet
- Tip Up Space Saving Handbasin
- Polyplastic 4.28 Rear & Side Windows
- Truma Gas Fire (Optional Blown Air System)
- Truma Ultrastore Water Heater
- Fresh Water Tank 45ltr (12 gallon)
- Waste Water Tank 45 litre (12 gallon)

For full specification & 360° tours visit our web site.



### Autoquest 100

4 Berth



### Autoquest 115

2 Berth



### Autoquest 120

2 Berth



### Autoquest 130

5 Berth



### Autoquest 140

4 Berth



### Autoquest 150

4 Berth

